

SOCIETY

A MAGNA PUBLICATION
www.societyinteriors.co.in

INTERIORS

Complimentary Copy
Not For Sale TOTAL 156 PAGES

₹ 100 November 2017

STUDIO HBA'S
INCREDIBLY
STIMULATING
DESIGNS

WELCOME TO THE *garden*

ACE COMEDIAN
BHARTI SINGH'S
PERSONALIZED HOME

PLUS

Monica Chawla • Sumana & Dinesh • Cadence Architects and
El + D Architecture + design Studio • Balraj Thethi





EARTHY YET STYLISH

KUMPAL AND ASSOCIATES HAVE
DESIGNED A FULLY-FUNCTIONAL,
MAINTENANCE-FREE BUNGALOW
IN PUNE FOR A NUCLEAR FAMILY.

Text: Marina Correa
Photographs: Prashant Bhat

1

A warm palette of browns and greys with a pop of orange in the painting above the taupe-coloured sofas characterize an elegant living room.

2

A triangular cut-out cabinet and recliner add panache to the son's bedroom.

3

A large exposed brick-wall lends a cosy and intimate feel to the study.

4

A side-board made of brass and wood makes for an attractive *pièce de résistance* near the jaali-cut partition at the entrance.





S

pread across 5,000 sq. ft., this ground plus one bungalow in Pune is designed by **Kumpal and Associates** not as a holiday home but as another fully-functional home, where their clients plan to divide their time between this new home and their residence in Mumbai. Hence, each room is designed as per personal preferences of each family member along with common areas and a full-fledged kitchen.

"Our client wanted a maintenance-free home, as they would not be staying there all their time. Also they wanted a nice bungalow feel, that felt different from their Mumbai abode," says principal designer Kumpal Mittal of Kumpal and Associates. By approaching the project with a 'Less is More' design philosophy, the emphasis is laid on creating intrigue via focal points and highlight corners rather than cluttering the home. Throughout the project, Kumpal has been ably assisted by interior designer Komal Jain.

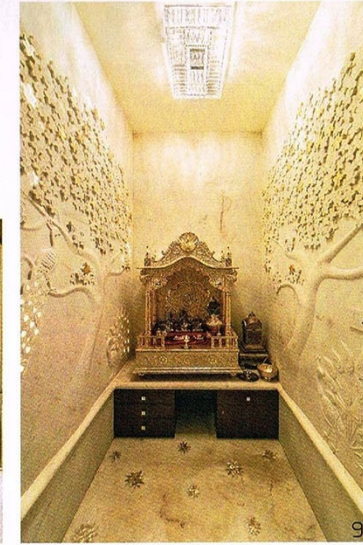


6

Stone clad walls and materials such as glass and solid wood have been especially used to keep maintenance low, whilst an earthy palette of predominantly browns and greys exude a one-with-nature feel. Also the extensive use of wood in the rafters, furniture, panel cladding etc. brings warmth to the overall space. Sloping roofs provide great heights and the application of rafters in the bedrooms lend character. Soft yellow lighting with a combination of direct and indirect lights has been incorporated to create a soothing ambience.



8



9

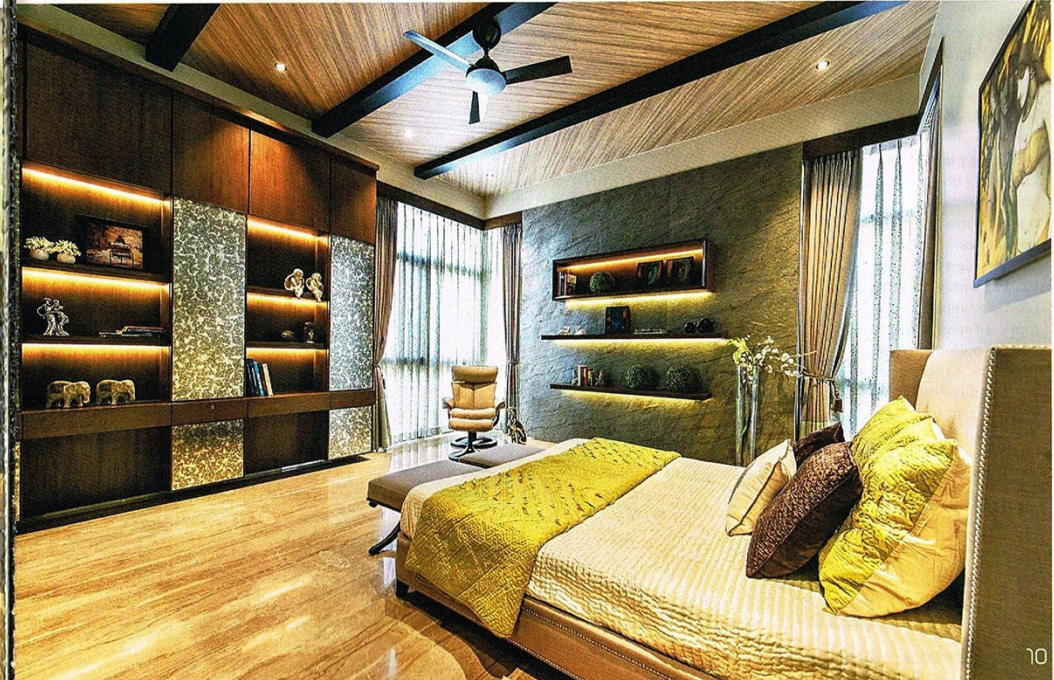
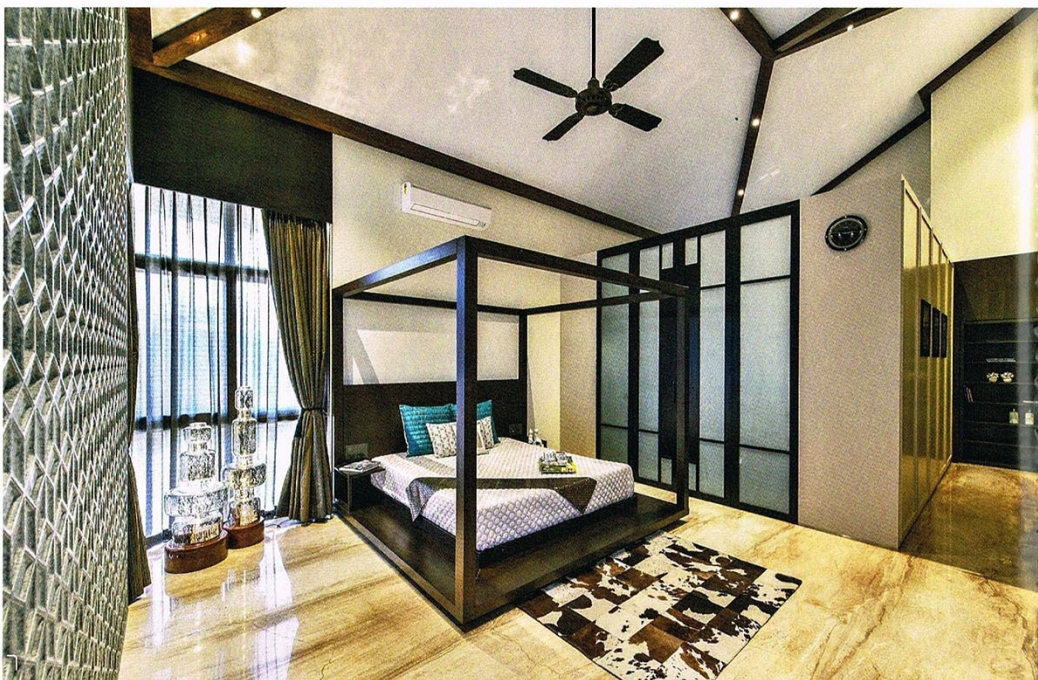
6
With red being her favourite colour, the designer has artfully woven it into the daughter's room.

7
A high-ceiling with a grey and brown palette infuses a masculine vibe to the son's bedroom.

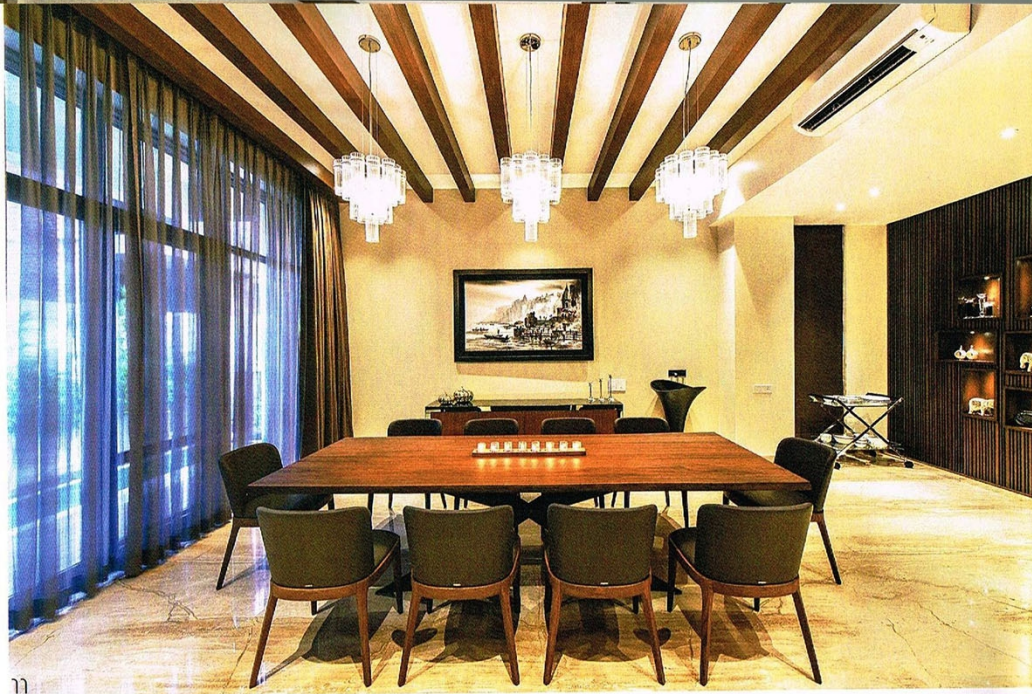
8
A captivating design is etched on the wall behind the four-poster bed in the master bedroom.

9
Engraved patterns on the walls, heighten the aesthetic in the puja room.

10
This guest bedroom doubles up as the owner's bedroom when they do not feel like climbing up to their bedroom on the first floor.



10



11 Rafters placed in an angular geometrical manner with strip LED lighting over the entrance porch makes for an impressive entry. As soon as, one steps into the home, a striking desert sandstone partition with cut-out jaali (that can be lit), partially screens off the living room. Travertino marble flooring complements the taupe leather sofas sourced from Casa Nova (Dubai), whilst one wall is done up in grey veneer cladding that continues till the first level; the wall opposite is clad in aluminum. A bright orange painting purchased from Studio 3 adds a pop of colour to the otherwise subdued palette.

12 Wood dominates the dining room carving-out a warm and welcoming space. Neat and functional, the kitchen is airy and boasts plenty of storage options.



A small area under the staircase has been utilized effectively with a seating arrangement and a touch of green. A combination of veneer and different kind of slates turn the adjacent wall into a highlight feature whilst spot lighting adds drama. A side board to the left of the entrance is an attractive element carved out in brass and wood.

Solid wood envelopes the dining room right from rafters, dining table and chairs, to the furniture and is even seen in the niches. A cylindrical glass pendant breaks this monotony of solidity and adds a touch of delicate charm. Leading to the first floor, is a marble-tread staircase. This lobby area is smartly converted into an informal lounge. Keeping true to their 'Less is More' mantra, Kumpal has juxtaposed a painting against a pretty wallpaper (sourced from Ochre Home couture, Colaba) and used spotlights to grab attention without the need for artefacts etc.

Plenty of storage defines the fully-equipped Hackers modular kitchen. The overhead cabinets are done up in a combination of profile shutters with a black-tinted glass and oak wood shutters, whilst brown quartz highlights the dado - making it a thoughtfully designed space.

Coming to the bedrooms, the master bedroom on the first floor features an arresting design engraved on desert stone that is sourced from plan B. An unusual-shaped mirror makes a stylish statement, whilst the four-poster bed with a golden-yellow bedspread adds a dollop of colour.

Red being her favourite colour, mostly red and multi-coloured strips of leather are used to create a lovely pattern on the headrest and then continued onto the side tables in the daughter's bedroom.

Neat and functional, the guest bedroom is well-equipped to handle guests. Interestingly, a large cutout is provided in the wardrobe that enables a guest to put the luggage, they do not have to unpack, snugly into the wardrobe.

Another room has been assigned as a second guest bedroom but doubles up as the owner's bedroom, when they do not wish to climb up to the master bedroom on the first floor.

The son's bedroom exudes a masculine vibe with grey and brown shades dominating the scene. The four-poster bed and triangular cut-out wardrobe is sourced from Ash & teak, whilst the chic recliner is from Casa Nova. The walk-in wardrobe cum son's washroom is clad in laminum tiles, whilst black Marquina marble in chevron pattern is used for the flooring.

For the study, a huge brick wall overpowers the decor lending it an intimate and cosy feel whilst the furniture, painting and floor-to-ceiling window adds a chic touch.

This balancing act between earthy charm and stylish flourishes is what the designer has diligently managed to pull off throughout this bungalow. ■

13 Black Marquina marble flooring in chevron pattern lends a chic touch to the son's walk-in wardrobe-cum-washroom.

14 This washroom is characterized by a simple and neat palette.



KUMPAL MITTAL

Kumpal Mittal established Kumpal and Associates in 2003. They believe in doing up spaces best suited to their client's lifestyle albeit with a touch of the firm's nuanced details. Their oeuvre includes residential, official and commercial interior projects.

KUMPAL AND ASSOCIATES
2nd Floor, Cecil Court
Maharajai Bhuvan Marg
Colaba, Mumbai 400039
connect@kumpalandassociates.com
22 2285 0031/22 2204 9880/ 98200 51249
www.kumpalandassociates.com