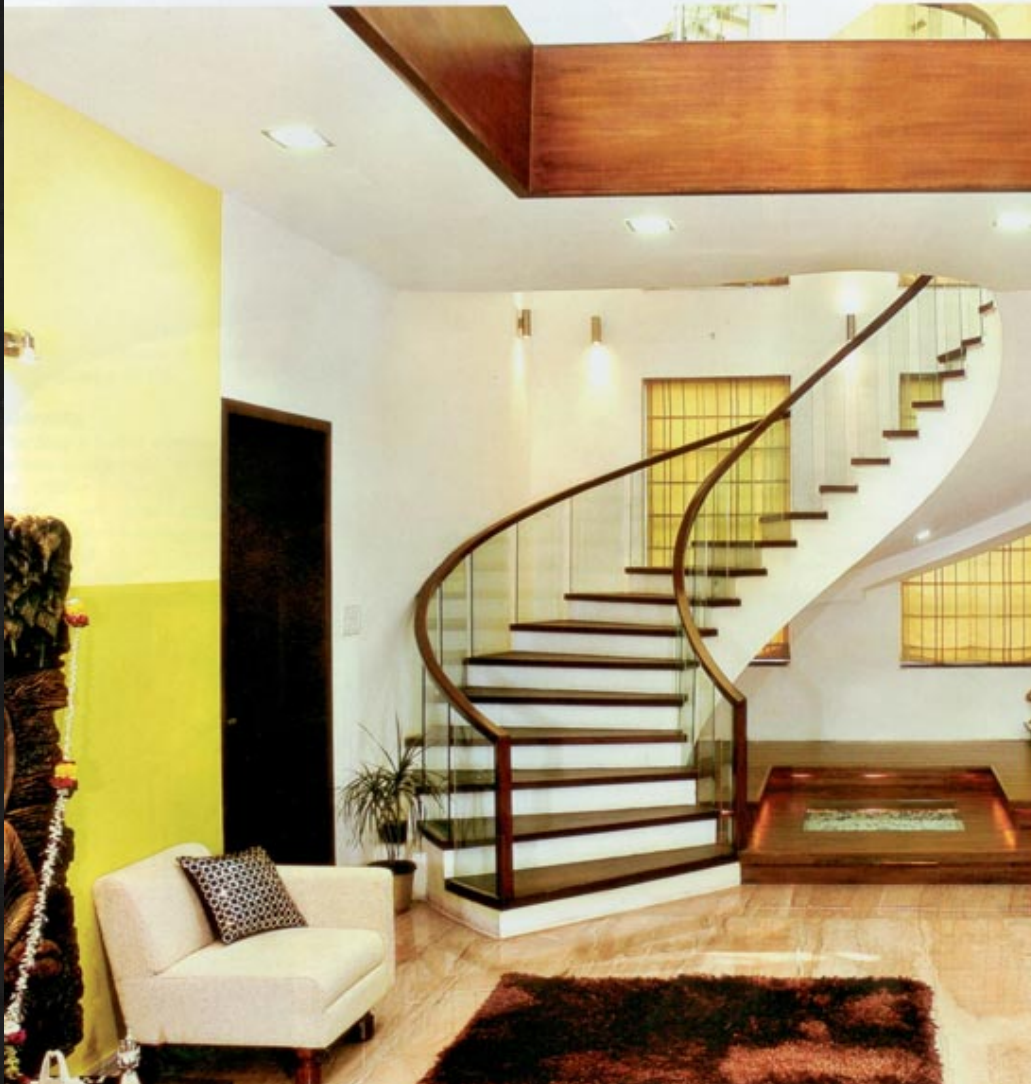


# Creative Lines



KUMPAL & ASSOCIATES  
[www.kumpalandassociates.com](http://www.kumpalandassociates.com)

There's always something fresh and new to look forward to in young architect Kumpal Agarwal Mittal's work

Impressions | Aruna Rathod



Transferring drawings from paper into reality is the most fascinating process of her work for young architect Kumpal Agarwal Mittal.

"When I did my first project I was thrilled to see spaces coming alive." Having done a sizeable number of projects today, she avoids repeating any aspect of design. "I want each site to look different and unique. I prefer

not to be identified with a particular style or aspect of design."

**HOW IT ALL BEGAN**

For Kumpal, her career in interior designing just happened. After graduation, she decided to try her hand at interior designing and found that it was quite challenging. A three-year diploma in interior designing and



Abroad, the teachers tend to open up your mind. There's never a 'no' to any idea. In fact, they help you build on them.

decoration at Rachana Sansad in Mumbai was not enough. She wanted to have a feel of international design. She went on to the United Kingdom for her Masters degree at the University of Central England. "The education and experience there was amazing. I learnt a lot about design. But nothing teaches you like working on a project hands-on."

**THE GROWING-UP YEARS**

"After doing spaces on my own, I now understand materials much better. I have also matured in my sense of design and aesthetics."

Having done some interesting projects by herself, at one point, Kumpal realised that furniture was one of the most important aspects of an interior. That's what drew her into furniture design and sourcing. As you enter Kumpal's store with Vishaka Kedia called Ash and Teak in Colaba, Mumbai, you can see the difference for yourself. It is like a breath of fresh air. Spread over just about 1,000sqft, the store is compact and well styled.

"We didn't want it to look

structured and too planned out but it just happened that the way we placed the pieces makes it look like a residential setting."

With Kumpal's cabin thrown in and office space for their staff, the store gives you ideas for compact office spaces as well. One of the walls is custom-made with stone cuttings placed from floor to ceiling. "It was painstaking to cut each stone into strips and fix it, but the effect is superb."

**PIECES DE RESISTANCE**

There are a few pieces that caught our eye for their sheer outstanding features: A wall shelf in the form of a concentric circle (made from bendable ply), a table with vertical shelves to store magazines and papers. The cushion covers, contemporary-design carpets, vases, bed covers, paintings, photo frames, lamps all lend a personal touch and add to the variety in Ash and Teak.

Kumpal, having trained abroad has a totally refreshing approach to ideas. "Abroad, the teachers tend to open up your mind. There's never a 'no' to any idea,